

The logo is centered within a white, rounded rectangular frame. The background of the entire image is a dense, black and white speckled pattern, resembling a marbled or stone texture. The text 'Milliken' is written in a cursive script, followed by a small trademark symbol (TM).

Milliken™

---

*Education Flooring*

---



## MEETING WITH MILLIKEN

### Highlights of Milliken Flooring Benefits:

· Beauty + Science = Transformation

Milliken doesn't just sell flooring - they sell science backed platforms

· Solve noise and moisture problems

· Create positive atmosphere in schools



Teacher retention is a big deal

· Better workplace for teachers



· Improve student learning, Improve student behavior

MILLIKEN COULD BE THE ANSWER  
TO A LOT OF PROBLEMS

GOOD  
VIBES

NOTES



Flooring is one of the biggest structural components affecting interior acoustics. Hard surfaces are noisy and do not absorb sound. They tend to reflect it back into the room or transmit it through the floor to spaces below. FLEXFORM SOUND™ LVT and Milliken carpet with WellBAC™ cushion backing reduce noise up to 50%.

Edge Lit shown in Black Light EDG133-229.

Longstraw shown in Rye LGS152.

## ACOUSTICS

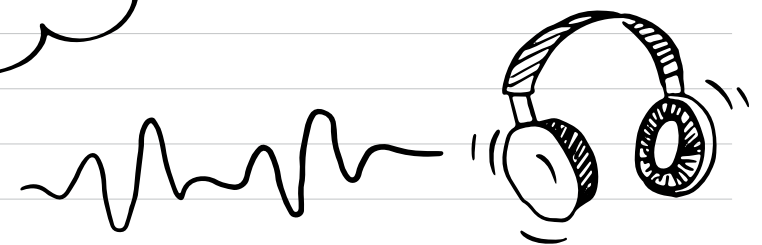
Milliken = The quietest floors in the industry

Sounds good to me!

- Noise causes stress ← Ha! Tell me about it. 😞
- Noise hurts concentration
- Acoustic technology for carpet and LVT
- FlexForm Sound LVT
  - 50% quieter than other LVT ←

GAME CHANGER!

I can't even imagine a quiet school



NOTES





= COMFORT =

### Reduce Teacher Fatigue

- Teachers stand in front of their classes
- Standing on hard floors is bad for joints
- Milliken carpet is cushioned
  - Reduces muscle fatigue by 25%
  - Reduces Heel impact loads by 30%
  - Lasts up to 50% longer than conventional carpet tiles

Keep my teachers  
≡ HAPPY! ≡

NOTES





Color Field shown in Mallard COL201 and Grey Teal COL201-108.



Unite Orb shown in Grey with Citron URB103-180.

## MOISTURE

Our school is built on a swamp

Moisture is a problem for a lot of schools

- Mold, mildew
- Poor air quality makes schools unhealthy
- SOLUTIONS: Carpet with WellBac cushion backing
  - Permeable, moisture evaporates
  - Eliminates the need to carry out extensive moisture mitigation before installation
  - LVT adhesive solution to alleviate moisture

Ask my rep

Talk about air quality and health at next internal meeting



NOTES





OBEX Tile Cut Cross shown in Grey CSC27-173.

# CLEANLINESS

Keep DIRT out of our school

• Milliken Entryway Systems keep out up to 95% of dirt and contaminants

• It's called OBEX

★  
NOBODY  
Can compete with  
Milliken

( Bar / Tile / Grid / Mat / Roll )

- Save money on maintenance

- Better indoor air quality

★ YES! ★

- Safety, cleanliness, long-term wear and tear

NOTES





The Lowdown Secret Tapes shown in Scout SEC197 and Agency SEC273.



OBEX Tile Cut/Fizz shown in Grey FZC27-173.



Lumenology Light Stitch shown in Gama LLS126 and Reflective shown in Iridescent LRF6-126.

# ≡ COLOR AND BRANDING ≡

## School Spirit

- Easily match school colors
- Mascot can be printed on carpet

Proprietary!  
Milliken invented this!

PrintWorks technology  
can digitally print seamless custom designs

This could really ramp up  
atmosphere

\* I love the Lowdown collection -  
Lots of color options



NOTES



**T**he Grain + Bias collection is part of the D/LUX Series of carpets. We devised a way to use our yarn and tufting technology to create a luxurious appearance while using less raw material, which reduces embodied carbon. Even with less material it's rated for high traffic areas. Create beautiful floorscapes with a lower carbon footprint.

## Milliken is fighting CLIMATE CHANGE

- Responsible sourcing of raw materials
- No harmful chemicals ← Red List Free
- Recycled materials
- Manufacturing close to customers
- M/PACT - Milliken flooring products are carbon neutral everywhere in the world.



Need to do this for  
future generations!

NOTES





Scan to Learn More

Milliken™

Customer Concierge 800.824.2246 | millikenfloors.com  
© 2021 Milliken & Company | Design © Milliken & Company

2710032231  
CB 0921