



QUICK SHIP: ONE

Milliken[™]

SHIPS WITHIN 3 DAYS



ABOUT QUICK SHIP..... 04

SHIPS WITHIN 3 DAYS

Formwork06

Ghost Artist08

Nordic Stories..... 10

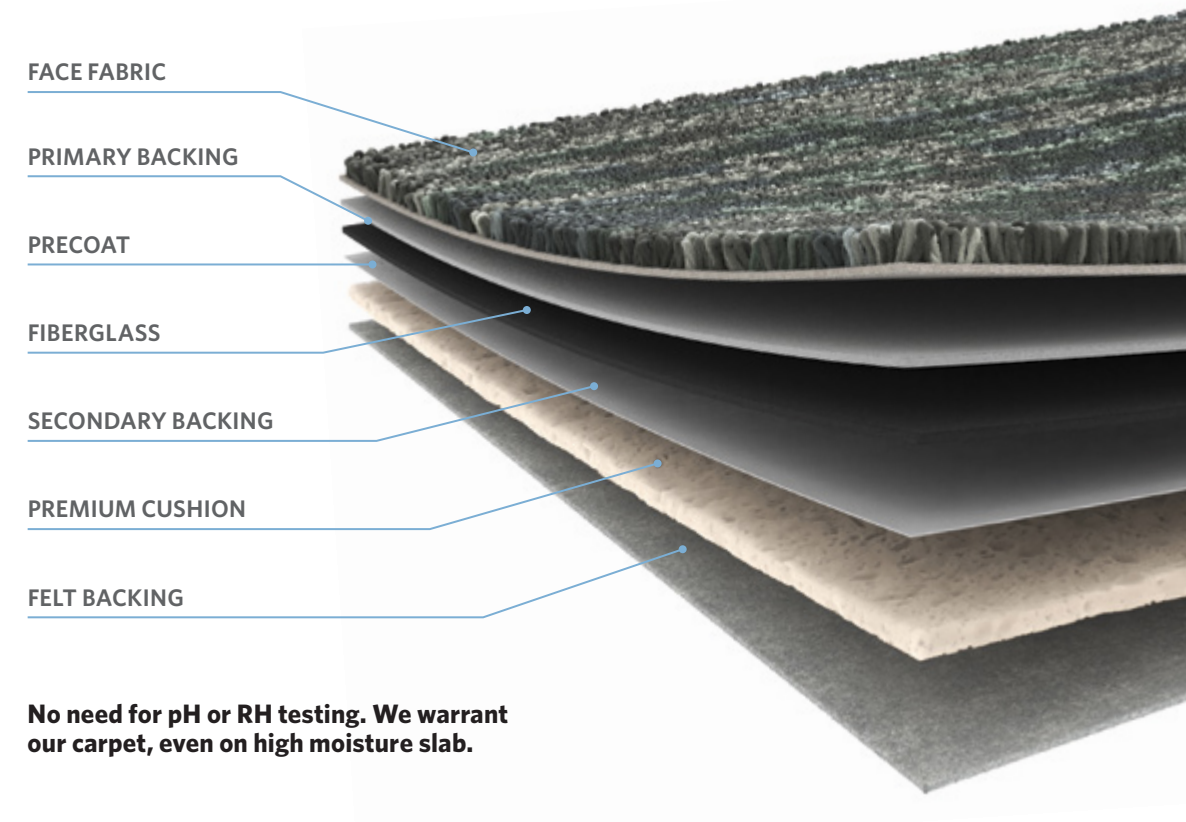
Southern Analog12





Ships within 3 days.

The Milliken Quick Ship program offers several of our best selling collections in a curated selection of colors, all with a 3-day lead time. Equipped with our innovative WellBAC® cushion backing, these collections provide the best combination of durability and support.



No need for pH or RH testing. We warrant our carpet, even on high moisture slab.



Scan to view all
Quick Ship options.

Formwork

Available in 50cm tile and broadloom.



Formwork in Plinth FWK118.



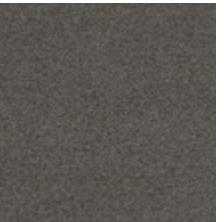
Pillar FWK13



Pier FWK122



Wainscot FWK94



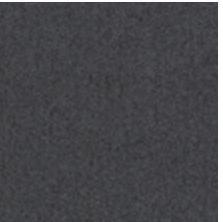
Truss FWK67



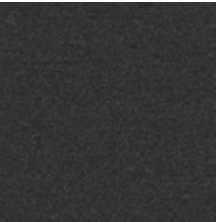
Foundation FWK120



Render FWK59



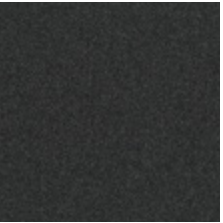
Plinth FWK118



Pitch FWK27



Spar FWK79



Vault FWK133



Facade in Stealth FAC27-52 and Obscura FAC13-118.

FACADE



Cloak FAC122-120



Obscura FAC13-118



Conceal FAC133-120



Stealth FAC27-52

Ghost Artist



Facade in Cloak FAC122-120. 9

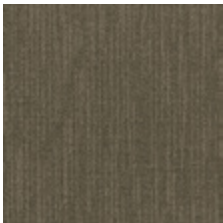
Nordic Stories



ISOGRAD



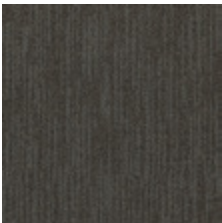
Spiritland IGD122-120



Sandpiper IGD124-94



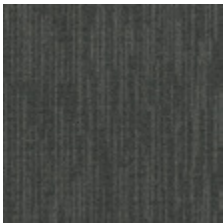
Norse IGD94-59



Lahar IGD67-59



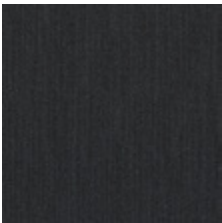
Fjord IGD108-13



Esker IGD13-119



Rock Powder IGD27-52



Ash Blanket IGD119-27

TECTONIC



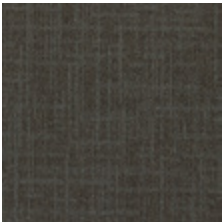
Spiritland TTC122-120



Sandpiper TTC124-94



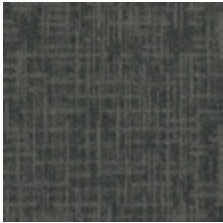
Norse TTC94-59



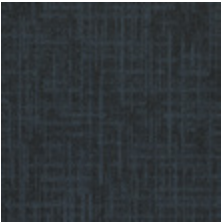
Lahar TTC67-59



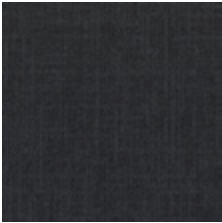
Fjord TTC108-13



Esker TTC13-119

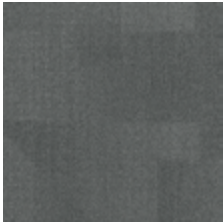


Rock Powder TTC27-52

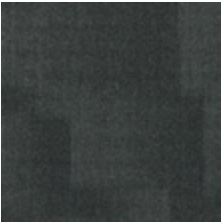


Ash Blanket TTC119-27

HIDDEN PLAINS



Fjord HDP108-13

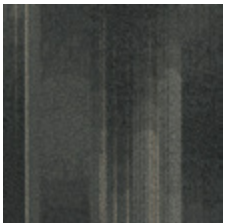


Esker HDP13-119

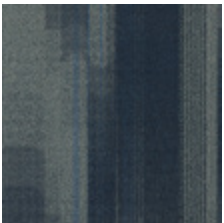


Panoramic in Zoom PA118.

PANORAMIC

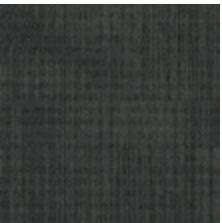


Vignette PA117



Zoom PA118

PINHOLE



Vignette PH417



Zoom PH418

VIEWFINDER

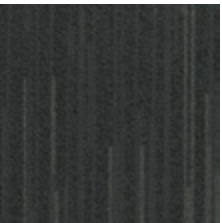


Vignette VF217



Zoom VF218

VOLTAGE



Vignette VT317




Zoom VT318

Southern Analog



Viewfinder in Vignette VF217 and Voltage in Vignette VT317.

FORMWORK

Construction Tufted, Level Loop	Nominal Total Thickness 0.34" (8.6 mm)	Texture Appearance Retention Rating (TARR) <i>Tile:</i> Severe Traffic End-Use Applications <i>Broadloom:</i> Heavy Traffic End-Use Applications
Tile Size <i>Tile:</i> 50 cm x 50 cm (19.7" x 19.7") <i>Broadloom:</i> 13' x 6" wide	Standard Backing <i>Tile:</i> PVC-Free WellBAC® Comfort Cushion Available with TractionBack®	Recommended Installation Method
Yarn Type Universal® Fibers Solution-Dyed Nylon	<i>Broadloom:</i> PVC-Free Endura-Loc™	 MONOLITHIC
Stain Resist / Soil Release StainSmart®		

GHOST ARTIST // Facade

Construction Tufted, Textured Loop	Stain Resist / Soil Release StainSmart®	Texture Appearance Retention Rating (TARR) Severe Traffic End-Use Applications
Tile Size 50 cm x 50 cm (19.7" x 19.7')	Nominal Total Thickness 0.32" (8.1 mm)	Recommended Installation Method
Yarn Type Universal Fibers® Solution-Dyed Nylon	Standard Backing PVC-Free WellBAC® Comfort Cushion Available with TractionBack®	 MONOLITHIC

NORDIC STORIES // Hidden Plains, Isograd, Tectonic

Construction Tufted, Textured Loop	Stain Resist / Soil Release StainSmart®	Texture Appearance Retention Rating (TARR) <i>Isograd and Tectonic:</i> Heavy Traffic End-Use Applications <i>Hidden Plains:</i> Severe Traffic End-Use Applications
Tile Size 50 cm x 50 cm (19.7" x 19.7")	Nominal Total Thickness <i>Isograd:</i> 0.30" (7.6 mm) <i>Hidden Plains:</i> 0.310" (7.9 mm) <i>Tectonic:</i> 0.32" (8.1 mm)	Recommended Installation Methods <i>Tectonic — Monolithic Only</i>
Yarn Type Universal Fibers® Solution-Dyed Nylon	Standard Backing PVC-Free WellBAC® Comfort Cushion Available with TractionBack®	 MONOLITHIC
		 ASHLAR

SOUTHERN ANALOG // Panoramic, Pinhole, Viewfinder, Voltage

Construction Tufted, Textured Loop	Stain Resist / Soil Release StainSmart®	Texture Appearance Retention Rating (TARR) Heavy Traffic End-Use Applications
Tile Size 50 cm x 50 cm (19.7" x 19.7")	Nomial Total Thickness 0.420" (10.7 mm)	Recommended Installation Methods
Yarn Type ECONYL® Solution-Dyed Recycled Nylon	Standard Backing PVC-Free WellBAC® Comfort Cushion Available with TractionBack®	 MONOLITHIC
		 ASHLAR



Milliken™ FOR HUMANKIND.



Scan to learn more about our
commitment to sustainability.

M/PACT™
CARBON NEUTRAL PROGRAM

EASIEST QUICK SHIP PROGRAM — IN THE — BUSINESS

TRACTIONBACK

Simplify your modular installation with Milliken's patented TractionBack®, an innovative backing system that is faster, more cost efficient, and environmentally superior to wet adhesives and peel-and-stick carpet tile.



ECONYL®
Made with 100% Regenerated Nylon

Declare.



SUSTAINABLE FEATURES

- Certified NSF-140 Gold
- Available with NSF-140 Platinum backing option
- Carry Environmental Product Declarations and Health Product Declarations which contribute to LEED certification
- Carry Declare transparency labels
- Comply with the Red List Imperative

SHOWN ON THE COVER

(Front, Clockwise) Ghost Artist in Stealth FAC27-52. Nordic Stories in Fjord HDP108-13. Southern Analog Viewfinder in Vignette VF217 and Voltage in Vignette VT317. Formwork in Plinth FWK118.

Milliken™

Customer Concierge 800.824.2246 | millikenfloors.com
© 2025 Milliken & Company | Design © Milliken & Company

2710037266
CP 1124

Images in this brochure are approximate for color and pattern scale.
Please use actual carpet samples to make your final selections.