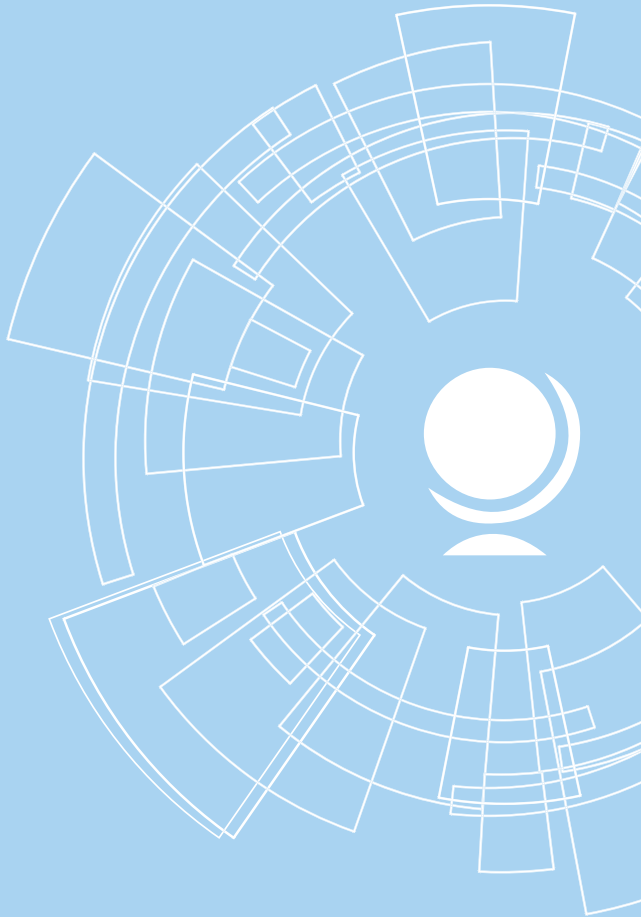


# TRAVEL & EXPENSE



**E&I** Cooperative  
Services  
*Sourcing. Strategy. Savings.®*



# Rethink Education Procurement. Think E&I

E&I Cooperative Services is the only member-owned, non-profit sourcing cooperative exclusively focused on serving the education community. As a cooperative, we take care of the entire contracting process, from RFP development through ongoing supplier management, saving our members valuable time and money.

We leverage the purchasing power of our nationwide membership to deliver a comprehensive portfolio of travel and expense contracts with industry-leading suppliers. We also provide our members with innovative sourcing solutions such as Strategic Spend Assessments and eProcurement.



## E&I Travel & Expense Portfolio

E&I can help you find the travel and expense solutions you need, including:

- Travel management for staff and athletics
- Hotel and conference management
- Ground transportation, including car rentals and on-campus fleet management
- Expense budgeting, reporting, and repayment
- Better pricing from the nation's leading car rental suppliers

Find out more at [www.eandi.org/travel](http://www.eandi.org/travel).

## Meet the Team



**Judy Schaffer**  
*Vice President, General Products  
& Interiors*  
[jschaffer@eandi.org](mailto:jschaffer@eandi.org)



**Paul Harris**  
*Business Development Manager,  
Athletics & Travel*  
[pharris@eandi.org](mailto:pharris@eandi.org)



**Stephanie Moore**  
*Contract Manager, Financial Ser-  
vices, Travel, Athletics & Culinary*  
[smoore@eandi.org](mailto:smoore@eandi.org)

# Travel and Expense Contracts

When it comes to running a successful travel and expense program, the many moving parts involve more than just booking car rentals and flights, but also managing budgets, expenses, and payments.

E&I suppliers in our comprehensive contract portfolio have the expertise, products, and solutions to help you successfully manage your institution's unique travel and expense program.

## Ground Transportation

Enterprise Fleet, CNR01399  
Enterprise Holdings, CNR01494  
Wheels Labs, CNR01514

## Hotel & Conference Management

Anthony Travel, CNR01396

## Payment & Expense Management

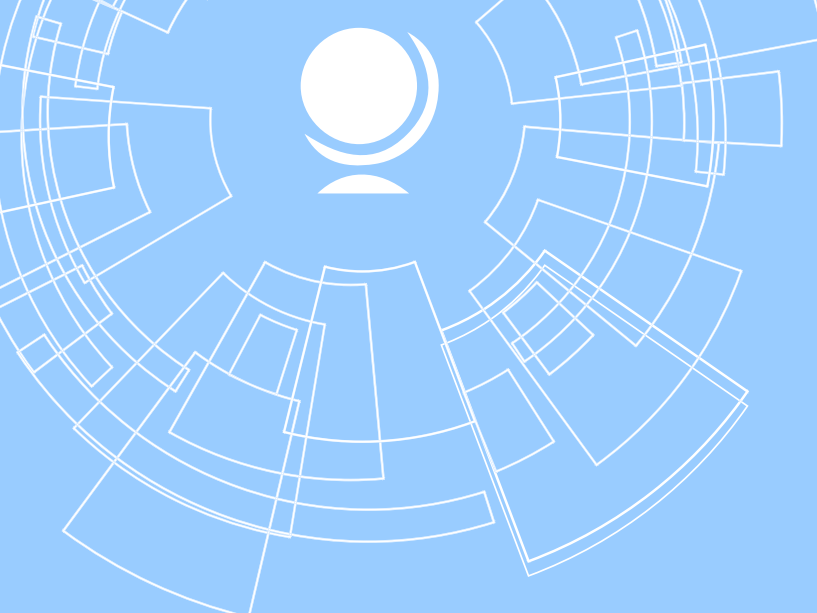
SAP Concur, CNR01490

## Relocation

SIRVA Worldwide, CNR01504  
UniGroup, CNR01503

## Travel Management

Anthony Travel, EI00046  
Corporate Travel Planners, CNR01479



5.22

Let's be social.



2 Jericho Plaza, Suite 309, Jericho, New York 11753  
800.283.2634 | [www.eandi.org](http://www.eandi.org)