

ADVANCED SOLUTIONS FOR Education

student achievement

testing and grading

rising cost and budget control

faculty and student printing

securing student information



New solutions for today's education challenges.

Educators in K-12 and higher education face many challenges, such as increasing productivity and efficiency, even as programs and budgets are cut. They also need to challenge and engage students by creating compelling print and online course materials, and ensure that students' confidential information is kept secure.

Education challenges



Accessing new technology despite tight budgets

Education remains heavily paper-based. Instructors need to modernize their curriculum development, so they can assemble, print, store, and share a higher volume of documents more easily. They also need opportunities to incorporate time- and cost-saving cloud and mobile technologies to continue to challenge more students in their institution.



Expediting the testing and grading process

Teachers spend an average of six to eight hours a week developing and grading tests. The required steps create a process that's time-consuming, cumbersome, and inefficient. Educators need to find ways to streamline the testing and grading process to maintain focus on helping students achieve.



Keeping student information confidential

Securing student information has always been a priority, but today it's an even greater challenge. The proliferation of devices and technology in schools makes it necessary to find smart, simple ways to limit unauthorized access to data and devices.



Achieving sustainability and accessibility goals

Schools at all levels are expected to be more environmentally and socially responsible, even with limited budgets. This means finding ways to reduce paper usage and waste, and implementing technology that's accessible to all people, including those with visual or other impairments.

Real solutions from Canon

Canon supports educators with solutions that address these challenges at both the K-12 and higher education environments. Canon devices and software solutions can streamline manual processes, improve collaboration, reduce and control printing expenses, expedite the testing and grading process, help facilitate with certain aspects of FERPA and HIPAA compliance, and assist education institutions with their sustainability goals.

Most importantly, Canon solutions can help teachers spend less time and energy on administrative tasks, and more time helping the next generation of students succeed.



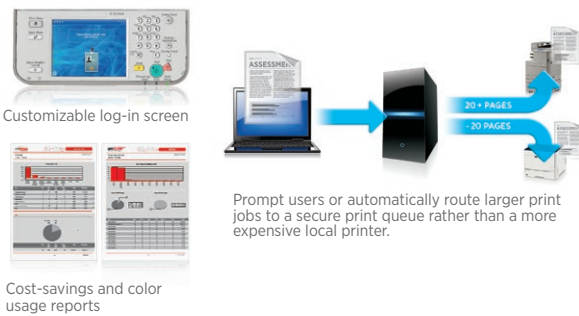
Manage printing costs for faculty, administration, and students



Facing continuing budget cuts, educational institutions must find ways to print more cost-efficiently, better manage student printing, and encourage responsible behavior by staff and students. Canon delivers solutions to help schools lower costs and improve printing efficiency without sacrificing the quality of education.

Encouraging and promoting cost-conscious printing practices

Managing and reducing printing costs in schools and campuses can be a real challenge. Universal Login Manager (ULM) and uniFLOW are just two of several Canon solutions that can help influence responsible printing behavior. ULM, a serverless solution, offers convenient user authentication and usage tracking functionality to help manage security and cost by controlling individual users' access and usage. And with uniFLOW, administrators can adjust device and network settings and limit more costly operations. uniFLOW can also provide a variety of reports with information about printing activity, usage comparison, and more.



Prompt users or automatically route larger print jobs to a secure print queue rather than a more expensive local printer.

Cost-savings and color usage reports

Enabling and improving student printing

Students need a quick and secure method to print anything from PDFs to Word documents directly from their mobile devices. At the same time, campus administrators need a solution that's easy to manage and configure. With the M500/M505 Self-Serve Copy and Print Station, students can easily access, pay (with debit, credit, or student cash card) and print images and PowerPoint presentations from computer labs or USB drives, mobile devices, and cloud accounts (such as Dropbox, Google Drive, and EFI PrintMe).* And with the M500/M505, administrators can also easily add and configure devices and print services, set or adjust price rates, and integrate with campus card payment systems.



The M500 provides the easiest ways for students to access, pay and print from mobile devices and cloud accounts.

Managing student printing costs

Educational institutions need simple and efficient ways to manage student printing costs throughout the campus. With integrations to leading campus management systems, such as Blackboard and CBORD, uniFLOW enables printing costs to be deducted directly from student accounts, making it easy to independently manage a declining balance program.



Integrating devices with existing cost-recovery systems

Some schools may already have cost-recovery systems in place. With embedded applications that leverage the Canon Multifunctional Embedded Application Platform (MEAP), administrators can easily link their imageRUNNER ADVANCE devices to PaperCut, Pharos, and Equitrac cost-recovery systems to effectively capture and track device-related costs.



Pharos Systems



* Subscription to a third-party Cloud Service required. Subject to third-party Cloud Service providers terms and conditions.

Create and distribute compelling class materials

Educators play a vital role in student achievement. That's why educators devote a lot of time preparing assignments and course materials to make classes more engaging and effective. Canon offers a variety of desktop solutions that make it easier to create and distribute materials that will engage students.



Easily creating customized course materials

Educators are continually challenged to keep their students engaged and captivated. With imageRUNNER ADVANCE Desktop software, teachers can quickly collect and assemble a variety of course materials, leaving more time to concentrate on teaching. With Canon solutions, educators can easily put together compelling course documents and create a single lesson packet. Canon solutions help reduce the time it takes to create course materials and provide engaging and effective lessons.



Combine both existing (i.e.; hard copy) and new content (i.e.; Web) into a single reading packet or assignment. Then just drag and drop it to e-mail to your entire class.

Establishing a more collaborative and productive educational environment

The education industry remains document intensive with very manual and inefficient processes. Administrators need to provide a more productive and collaborative document management solution for hard-copy student files, registration documents, attendance forms, and more. With Therefore™, a document management system, faculty and staff are able to more effectively do their job by easily capturing, archiving, retrieving, editing, and processing documents efficiently and securely.



With Therefore, faculty and staff have the ability to capture, archive, retrieve, edit, and process documents quickly, efficiently, and securely.

Spend less time testing and grading, and more time teaching

Teachers already have busy schedules and need simpler, easier ways to develop, grade, and analyze student tests. The Intelligent Grading Solution (IGS) provides educators with the flexibility to create and grade exams and then generate detailed, analytical reports directly from an imageRUNNER ADVANCE system.

Designed to be easy to use and simple to administer, IGS removes the need for schools to manage servers onsite or provide ongoing maintenance. With this embedded, easy-to-maintain, cloud-based solution, educators can quickly gain insight into class and exam performance using existing MFPs. This helps increase the time necessary to focus on student achievement.



Create Tests
Large, intuitive interface makes it easy for teachers to create and grade exams. Simple-to-follow steps help make it easy to learn.

Exams are printed with student names, number of questions, and the number of choices the teacher would like for this exam.

Grade Tests
The intelligent Grading Solution makes grading exams quick and easy. The teacher logs in, selects the test, and scans the answer sheet and completed exams.



Continue to create and access compelling materials from anywhere

Educators also spend a great deal of time preparing engaging and effective materials. To do this in less time, many teachers now use tablets and other mobile devices. Canon offers mobile solutions that make it easier to assemble custom materials while providing convenient ways to access and print these documents for distribution to colleagues, students, and students' parents.



Effortlessly access Google Drive

Adoption of Google Apps for education continues to increase. Educators now use Google Drive continuously to store lesson plans and course documents, and Canon has multiple ways to use the imageRUNNER ADVANCE system to interact with Google Drive. For example, hard-copy documents can be scanned into and printed from Google Drive. Likewise, from the touch-screen of the MFP, teachers and faculty can retrieve saved course documents directly from their Google Drive folder using uniFLOW. In addition, uniFLOW allows users, through their Google accounts, to store their documents in the cloud on Google's servers and print to Web-connected printers from any Web-enabled device, from phones to tablets to Chromebooks to PCs.



Access and print documents remotely from Google Drive.

Convenient and secure printing from mobile devices

Instructors that need to print hard-copy versions of their course documents in a hurry can print them through a suite of Canon mobile printing solutions. With peer-to-peer, and cloud-based mobile print and scanning solutions, such as Canon Direct Print and Scan for Mobile, the Canon Mobile Print app, and EFI PrintMe, instructors can send course materials from their smartphones or tablets in minutes and retrieve hard-copy versions of the document from the device output tray.

With concerns regarding unauthorized access or distribution of confidential student information, educators also need the ability to print sensitive information directly from their mobile devices with confidence. With uniFLOW Mobile Printing—a server-based mobile print and scan application that runs on tablets or smartphones—documents are printed securely and actions are easily tracked for overall reporting.



Users can establish a link between an imageRUNNER ADVANCE system and their smartphones or tablets by scanning a QR code from the control panel display.



With the Canon Mobile Print app and EFI PrintMe, educators can print documents from their mobile device by using a simple print request workflow.



Send documents from your mobile device using the uniFLOW Mobile app.

Authenticate at the device and select your document to print securely.

Keep faculty and student information secure

Education facilities aggregate a lot of information that needs to be kept secure—from student health and financial information to grades to staff and payroll and employee reviews. Canon offers practical solutions that support HIPAA and FERPA compliance, and are specifically designed to help safeguard confidential information from being accessed or printed during daily use and at end of life.



Limiting access to private information

IT administrators within education institutions need to manage exactly who's authorized to access, print, copy, scan, or send confidential information. Canon offers various authentication solutions that integrate with Active Directory, such as Universal Login Manager (ULM), AA-PRINT, and uniFLOW to help ensure that no one, whether knowingly or accidentally, sends a document or message to the wrong location. And with Canon Access Management System (AMS), you can make it easy to restrict individual access to unauthorized device features. Users can also be assigned pre-defined roles, and custom roles can be created to fine-tune access control.

Teaching Assistant	Teachers/Faculty	Principal
<input checked="" type="checkbox"/> B/W Copy	<input checked="" type="checkbox"/> B/W Copy	<input checked="" type="checkbox"/> B/W Copy
<input type="checkbox"/> Color Copy	<input type="checkbox"/> Color Copy	<input checked="" type="checkbox"/> Color Copy
<input checked="" type="checkbox"/> B/W Print	<input checked="" type="checkbox"/> B/W Print	<input checked="" type="checkbox"/> B/W Print
<input type="checkbox"/> Scan	<input checked="" type="checkbox"/> Scan	<input checked="" type="checkbox"/> Scan
<input type="checkbox"/> Send	<input checked="" type="checkbox"/> Send	<input checked="" type="checkbox"/> Send
<input type="checkbox"/> Fax Send	<input type="checkbox"/> Fax Send	<input checked="" type="checkbox"/> Fax Send

Profiles can be set according to user or role that allow or restrict access to specific device features as needed.

Securely print confidential documents

Ensuring sensitive information, such as student grades, is kept confidential is a priority for education institutions. Canon provides driver-based, serverless, and server-based solutions, such as Canon Encrypted Secured Print, AA-PRINT, Secured Print, and uniFLOW Secure Printing. These solutions require users to authenticate at a device before private information is released for print. Educators no longer have to worry about sensitive information being left on output trays. With Canon fax forwarding solutions, faculty and staff can send faxes automatically to e-mail, desktop locations, and even password-protected Advanced Box folders, ensuring student data is securely routed to the appropriate destination.



Users can be required to authenticate at the device before printing.

Incoming faxes can be securely routed to a password-protected Advanced Box, network folder, or e-mail.

Safeguarding sensitive device data

Another area of potential vulnerability is device hard drives that may store confidential student health and financial information. Canon solutions can help educators safeguard student information and assist in their strategy to meet FERPA and HIPAA regulations.



The standard **HDD Format** feature provides up to **9x** overwrite for all stored information when devices reach end of life.



The **HDD Data Erase Kit** helps ensure that sensitive data is deleted daily and properly erased with standard format overwriting (up to **3x**) as a part of routine job processing.



The optional **HDD Data Encryption Kit** uses AES 256-bit encryption to help protect all data stored on the internal hard drive.



The standard **HDD Erase Scheduler** enables you to set devices to automatically erase all copy, scan, print, and other activity data from hard drives on a set schedule.

Boost accessibility and improve productivity for all

Students with disabilities represent 11 percent of all college students.* Canon solutions help boost productivity for the widest possible range of users, including those with disabilities. These capabilities expand access so that users with physical challenges can more quickly and easily access the advanced features of the device regardless of ability.



Enabling accessibility for all users

Canon is committed to creating technology that's fully accessible by everyone, including those with physical challenges. Our solutions enable schools to address concerns about limited mobility and visual impairments.

Solutions for the visually impaired

For the visually impaired, many Canon products offer specially designed features such as voice guidance and operation, concave keys, and reversible displays. In addition, large, bright control panels, Braille label kits, and screen reading software ensure that the visually impaired can easily use Canon devices.



Remote Operator Software enables device control from a networked PC.



Tactile controls increase functionality.



Voice Operation Kit helps to simplify input of commands.



LCD control panels can "reverse" to increase visibility.

Solutions for those with limited mobility

For students, faculty, and staff with limited mobility, Canon products feature ADF Access Handles and separate keyboards to allow for a more efficient and productive school or campus. A variety of imageRUNNER ADVANCE models also offer flexible control panels, as well as single-button drawer openers and toner doors that open automatically during the replacement process.



Control panel can flexibly tilt to be visible from any angle.



Keyboard can improve access for seated users.



Easy to access toner ink can be changed with one hand.



ADF Access Handle enables seated users to operate the device.

*Source: U.S. Government Accountability Office

Solutions that boost sustainability and environmentally conscious behavior

Schools are at the heart of their communities, and are expected to be a model for environmental responsibility. Canon is committed to developing technologies that meet these demands by offering environmentally conscious solutions.



Working more responsibly

Canon strives to achieve the highest environmental standards, with features that benefit education, by reducing costs and minimizing the time necessary to manage devices. As an ENERGY STAR® partner since 1993, Canon has qualified more than 200 products that incorporate original and advanced energy-efficient technologies without compromising features or performance. Its multifunction devices have received ENERGY STAR awards for cost- and energy-saving features.

Reduced warm-up times and heat usage

imageRUNNER ADVANCE features key printing elements that can heat up quickly and print at lower temperatures, resulting in reduced costs and less wait time for educators to begin using the devices.

One-watt Sleep mode

With one-watt Sleep mode, imageRUNNER ADVANCE devices can lower energy consumption even when the device is not in use, helping to keep costs down.

Recycle-conscious designs

Canon development teams consider all stages in each product's life cycle, striving to maximize the use of plastics that have already been introduced into the environment wherever possible.

Toner Cartridge Recycling

To help support local recycling efforts, a plastic resin code is engraved on each toner cartridge. In the event that Canon plastic toner cartridges can't be recycled locally, Canon also offers a collection program.

Better scanning with less energy

Scanning continues to be a large part of education and Canon provides the technology in imageRUNNER ADVANCE devices that reduce scanning power consumption by up to 75% over other models.

Reducing waste

Canon enables you to implement smart printing policies, such as secured printing, default duplex printing, and fax forwarding to help reduce waste.

Smaller, lighter products

Canon strives to make its products the very smallest and lightest available, which reduces the amount of energy needed for transportation from factory to your facility.



Canon is proud to offer EPEAT registered products, helping governments, businesses, and individuals identify solutions that can help reduce their environmental impact.

usa.canon.com/advancedsolutionsforeducation



Canon, imageRUNNER, and MEAP are registered trademarks of Canon Inc. in the United States and may also be registered trademarks or trademarks in other countries. imageWARE is a registered trademark of Canon U.S.A., Inc. in the United States and is a trademark of Canon Inc. in certain other countries. All other referenced product names and marks are trademarks of their respective owners. All printer output images are simulated. Nothing in this brochure should be construed as legal counsel or regulatory compliance advice, including without limitations with respect to statutes such as Sarbanes-Oxley, FERPA, HIPAA, GLBA, Check 21, or the USA Patriot Act. Each customer must have its own qualified counsel determine the advisability of a particular solution as it relates to regulatory and statutory compliance. Specifications and availability subject to change without notice. Not responsible for typographical errors.
©2016 Canon U.S.A., Inc. All rights reserved.